

PB3315



The 3315's unique telescoping articulated boom design provides exceptional up and over outreach specifications. Dual position stabiliser legs allow the 3315 to be set-up in the most difficult locations. Even with the stabilisers set in the narrow position, a complete 360 degrees slew is still possible!

This 33 m Spider Lift is amazingly compact. With the basket removed, the length is only 6.5 m. Height is 1.99 m and width 1.39 m for commercial doorway access (with tracks retracted.) The extra-long travel stabiliser legs mean you can not only set the 3315 up on very uneven ground, but it can also self-load onto some trucks and trailers.

Strong steel booms ensure an extremely stable working platform. Uniquely a very large 2.2 m wide basket can be used on this rugged machine.

Far left: The 3315 provides huge reach from very compact dimensions.

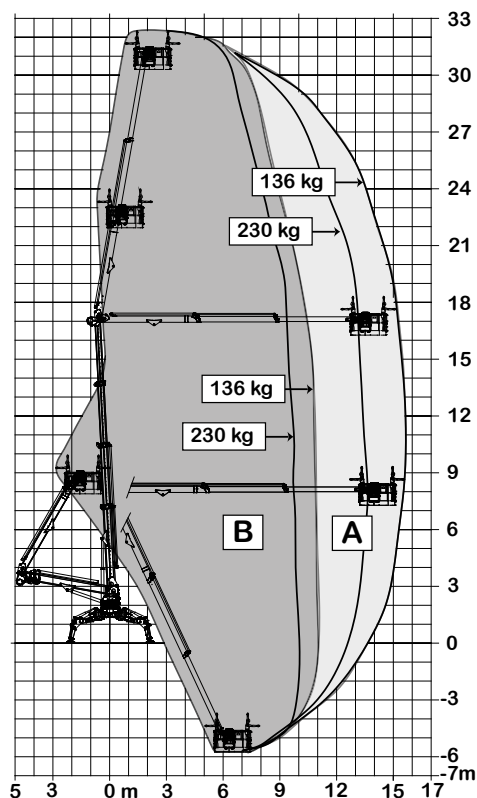
Above middle: Transport is much simpler and more economical than conventional Boom Lifts of similar working height.

Above: Look at the travel in those legs! This machine will set up almost anywhere. The 3315 also provides a 'negative reach' of - 5 m.

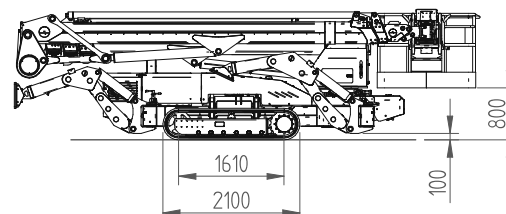
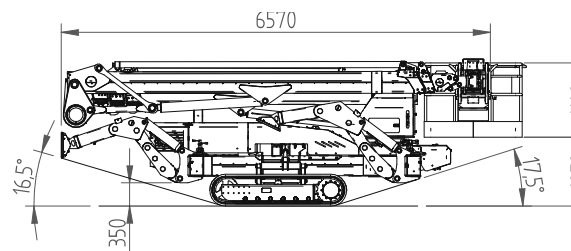
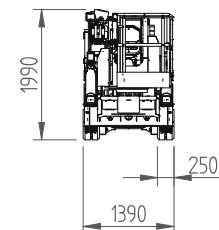
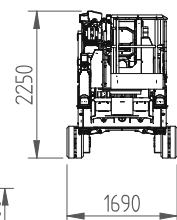
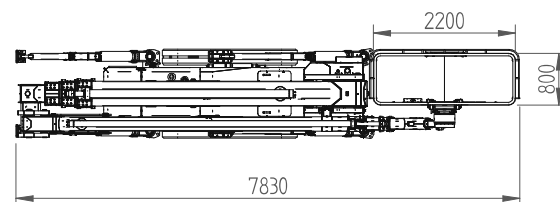
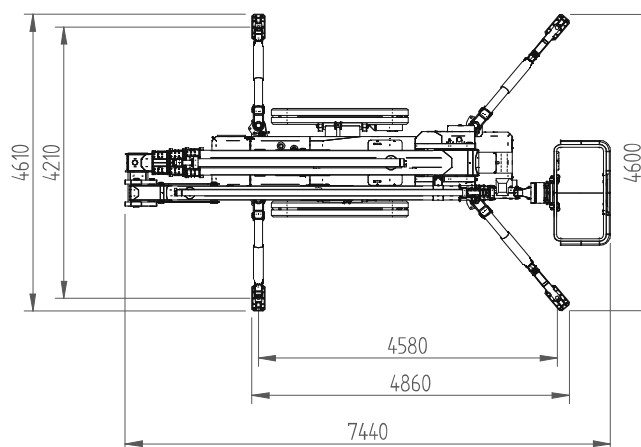
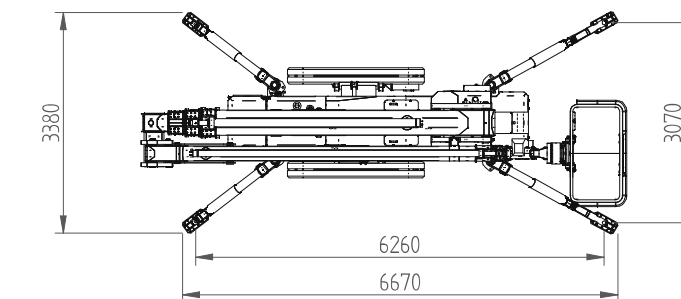
PB3315

Max working height	32.40 m
Max working height in narrow set	32.40 m
Max horizontal outreach	15.20 m
Max SWL	230 kg
Weight: Engine + Batteries	6980 kg
Turret rotation	400 °
Basket rotation	180 °
Ground pressure driving (approx)	68.6 kN/m ²
Max stabiliser force	46.8 kN
Max stabiliser pressure (std foot pad)	520 kN/m ²
Traffic load (live load) travelling	6.75 kN/m ²
Traffic load (live load) stabilised wide	3.5 kN/m ²
Traffic load (live load) stabilised narrow	3.4 kN/m ²
Auto levelling	Std
Max slope for stabilisers (no extra pads)	15 °
Gradeability lengthwise	16 °
Gradeability sideways	17 °
Standard power source	Kubota 22 Hp Diesel
Optional power source	N/A
Dual power options	Batteries
Expanding tracks	Std
Drive Speed	2.2 km/h
Radio control	Std
Electric emergency lowering	Std

(All specs E&OE and subject to change)



B= Narrow set-up
 A= Wide set-up



SEE THE 3315
IN ACTION

